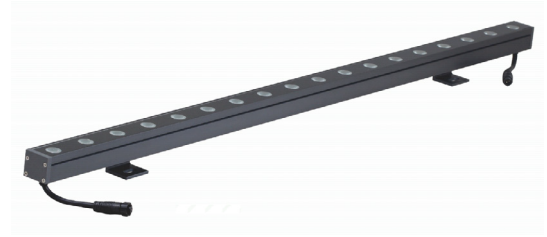


LIGHT BAR Max OUTDOOR

LED 6W / 9W / 18W **70 ~ 75 lm/W**



Características mecánicas Mechanical specifications



RGB
3 in 1



RGBW
4 in 1

Material del cuerpo: aleación de aluminio

Housing material: aluminum alloy

Material de la lente: vidrio

Lens material: glass

Acabado: aluminio o pintado

Finish: aluminium or painted

Tamaños: L350 x W36 x H57mm

Size L510 x W36 x H57mm

L1000 x W36 x H57mm

Basculación: 180°

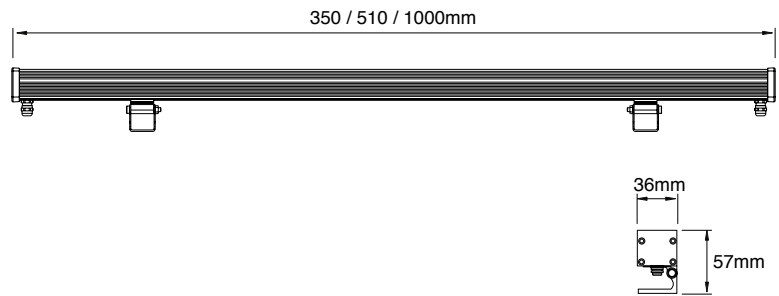
Tilting

Tamaño-color / Weight-color:

350mm: monocolor (6W)

510mm: monocolor (9W)/ RGB (9W)/ RGBW (14W)

1000mm: monocolor (18W)/ RGB (18W)/ RGBW (28W)



Características ópticas Optical specifications

Potencia: 6W (350mm)

Power 9W/14W (510mm)

18W/28W (1000mm)

Eficacia: 70lm/W (6W/9W)

Efficacy 75lm/W (18W)

38lm/W (14W/28W) RGBW

Flujo luminoso: 420 lm (6W)

Luminous flux: 630 lm (9W)

1360 lm (18W)

Color: Monocolor (350mm)

RGB / RGBW / Monocolor (510mm)

RGB / RGBW / Monocolor (1000mm)

Temperatura de color: 2700K ~ 6500K

Color temperature

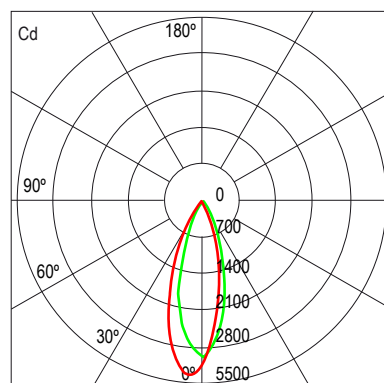
Ángulo de apertura: 15° / 20° / 30° / 45° /

Beam angle 60° / 20°x60°

Temperatura de trabajo: -20°C ~ 40°C

Work temperature

Modelo 9W - 30° - 6000K



Distribución Polar Candelas / UNIT: cd

— V 0,0° ~ 31,0°

— H 0,0° ~ 32,8°

ÁNGULO PROMEDIO DEL HAZ (50%): 31,9 DEG.

Características eléctricas Electrical specifications

Driver: NO incluido

Driver: NO included

Decoder: Integrado (RGB / RGBW)

Decoder: Integrated (RGB / RGBW)

Tensión de entrada: 24V DC

Input voltage

Modo de trabajo: color constante / DMX512

Working mode: single color / DMX512

